



KING COUNTY

1200 King County Courthouse
516 Third Avenue
Seattle, WA 98104

Signature Report

May 31, 2011

Motion 13483

Proposed No. 2011-0096.2

Sponsors Gossett and Phillips

1 A MOTION approving reclaimed water strategies to move
2 forward with engineering, economic and environmental
3 analyses to determine if, how, when, where and by what
4 funding mechanisms King County's existing reclaimed
5 water program should expand; and rescinding motion
6 13108.

7 WHEREAS, in December 2009, through Motion 13108, the King County council
8 approved the planning process to determine if, how, when, where and by what funding
9 mechanisms over the next thirty years King County's existing reclaimed water program
10 should expand, and

11 WHEREAS, in accordance with Step 2 of the approved planning process, King
12 County's wastewater treatment division ("WTD") collected data from October 2009
13 through March 2010 on potential nonpotable consumptive and environmental
14 enhancement uses in the region that reclaimed water could serve through:

- 15 1. Meetings with more than forty interested parties, including tribes, cities, water
16 districts, wastewater utilities, environmental groups, state agencies and watersheds;
17 2. Public workshops; and
18 3. Reviews of existing literature and studies, and

19 WHEREAS, as a result of these efforts:

20 1. Over eight hundred potential locations for nonpotable consumptive uses of
21 reclaimed water were identified;

22 2. Environmental flow restoration targets were estimated for streams in twelve
23 watershed basins in the planning area that could likely benefit from additional water
24 inputs;

25 3. The potential for using reclaimed water to aid in the management of Lake
26 Washington water levels was identified; and

27 4. The potential for using reclaimed water to support groundwater recharge in the
28 city of Auburn was identified, and

29 WHEREAS, in April 2010, in accordance with the planning process, based on the
30 data gathered in Step 2, the King County executive authorized WTD to move forward
31 into Step 3 of the planning process to develop and refine conceptual reclaimed water
32 strategies to serve the potential uses for reclaimed water identified in Step 2, and

33 WHEREAS, as part of Step 3 of the planning process, WTD developed thirteen
34 initial reclaimed water strategies to serve potential uses for reclaimed water that were
35 identified during Step 2 of the planning process, and

36 WHEREAS, WTD solicited input and feedback on the thirteen reclaimed water
37 strategies through a workshop on April 29, 2010, and through more than twenty-five
38 subsequent individual meetings that took place during May through July 2010 with
39 representatives of tribal governments, water and sewer districts, local jurisdictions, state
40 and federal agencies, water resource inventory areas and environmental groups, and

41 WHEREAS, based on this input and feedback, WTD refined the initial set of
42 conceptual reclaimed water strategies, and

43 WHEREAS, WTD gathered feedback from interested parties on the refined
44 strategies in fall 2010, and

45 WHEREAS, the executive recommends that the following three refined reclaimed
46 water strategies move forward into Step 4 of the planning process for additional analysis:

47 1. Redmond/Bear Creek Basin Brightwater Centralized Strategy. The
48 components of this reclaimed water strategy include approximately ten million gallons
49 per day ("mgd") of reclaimed water production at the Brightwater Treatment Plant, with
50 approximately fourteen additional miles of distribution pipelines, a portion directly from
51 the Brightwater Treatment Plant site, and a portion from the south segment of the
52 Brightwater reclaimed water pipeline. The strategy would be able to serve potential
53 nonpotable consumptive uses and wetland enhancement in the city of Redmond and
54 wetland enhancements in the Bear Creek basin. The strategy represents an addition to the
55 seven mgd of reclaimed water that will be available to areas in north King County, south
56 Snohomish county, and the Sammamish valley when the south segment of the
57 Brightwater reclaimed water pipeline is operational, and

58 2. Reclaimed Water Skimming or Polishing Decentralized Strategy. The
59 components of this strategy include a preassembled or packaged reclaimed water
60 treatment plant sited near and receiving water from a King County regional conveyance
61 pipeline that could provide up to five hundred thousand gallons of reclaimed water.
62 Approximately one mile of distribution pipeline would be required. The strategy would
63 be able to serve nearby nonpotable consumptive uses, and

64 3. Renton/Tukwila South Plant Centralized Strategy. The components of this
65 strategy include production of an additional two mgd of reclaimed water at South

66 Treatment Plant, with approximately eighteen miles of distribution pipelines. The
67 strategy would be able to serve nonpotable consumptive uses in the cities of Renton and
68 Tukwila and wetland enhancement in the city of Renton adjacent to the Cedar river, and

69 WHEREAS, each of the three strategies has been developed for planning
70 purposes only, represents the range of potential nonpotable consumptive and
71 environmental enhancement uses for reclaimed water identified across the region, uses
72 existing regional wastewater and reclaimed water infrastructure with incremental
73 expansions and aligns with the feedback from interested parties to start small and build
74 on successes over time, and

75 WHEREAS, additional planning-level engineering, economic and environmental
76 analyses will provide important information on the economic costs and benefits,
77 engineering opportunities and constraints, and environmental effects associated with each
78 strategy, and

79 WHEREAS, the results of the analyses and application of evaluation criteria that
80 were approved by the King County council through Motion 13211 will help to answer
81 many of the issues' and questions raised by interested parties and provide essential
82 information in the process to determine if, how, when, where, and by what funding
83 mechanisms the county's existing reclaimed water program should expand;

84 NOW, THEREFORE, BE IT MOVED by the Council of King County:

85 A. The three reclaimed water strategies that are approved to move into Step 4 of
86 the planning process for economic, engineering and environmental analyses are:

- 87 1. Redmond/Bear Creek Basin Brightwater Centralized Strategy;
88 2. Reclaimed Water Skimming or Polishing Decentralized Strategy; and

89 3. Renton/Tukwila South Plant Centralized Strategy.

90 B. The Step 4 analysis of the three reclaimed water strategies is intended to
91 provide information on potential approaches to reclaimed water. Step 4 of the process
92 will be expanded to include an analysis, consistent with subsection B.1. of this motion, of
93 alternatives to reclaimed water as well as the development of policies to guide reclaimed
94 water planning, as follows:

95 1. The identification of alternatives to reclaimed water is moved into Step 4 and
96 will be expanded to include scoping of alternatives, including information from available
97 sources on the estimated scope and cost for such alternatives, to enable policymakers to
98 make reasonable comparisons among various potential alternatives to reclaimed water. A
99 detailed project-specific analysis of alternatives to reclaimed water would take place
100 before initiating any reclaimed water capital project;

101 2. As part of Step 4, the wastewater treatment division will develop policies to
102 guide the determination of whether or to what extent King County's reclaimed water
103 program should expand in the future and seek input from cities, water and sewer districts,
104 tribes and other interested parties. Considering the information from the analysis of the
105 strategies in Step 4, the identified alternatives to reclaimed water, the stakeholder input
106 on reclaimed water policies, and other relevant factors, the executive will recommend
107 policies to guide planning for reclaimed water. The policies will include, but are not
108 limited to:

109 a. policies to guide whether to proceed with a reclaimed water project as
110 compared to another approach that could yield similar outcomes;

111 b. policies to guide the financing of any expansion of the county's reclaimed
112 water program;

113 c. policies to guide how costs and benefits of reclaimed water projects should
114 be allocated; and

115 d. policies to guide how reclaimed water should be priced, such as full-cost
116 recovery or some other approach, which may depend on the particular use involved; and

117 3. The council will consider and approve by motion the proposed reclaimed
118 water policies at the conclusion of the revised Step 4 of the process. Those policies
119 would guide any expansion of the county's existing reclaimed water program and will be
120 the basis for updating reclaimed water policies in the Regional Wastewater Services Plan.

121 C. This motion hereby amends the reclaimed water planning process approved
122 by Motion 13108. The amended process to determine if, how, when, where and by what
123 funding mechanisms King County's existing reclaimed water program should expand is
124 depicted in Attachment A to this motion and is hereby approved. The wastewater
125 treatment division is directed to update the timelines in Attachment A to this motion,

126 consistent with this motion.

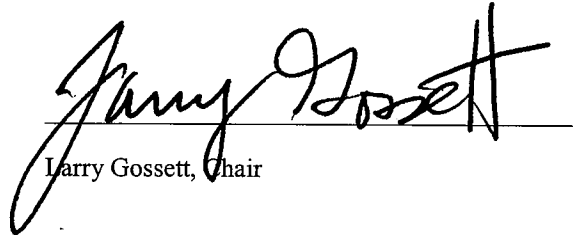
127 D. Motion 13108 is hereby rescinded.

128

Motion 13483 was introduced on 2/22/2011 and passed by the Metropolitan King County Council on 5/31/2011, by the following vote:

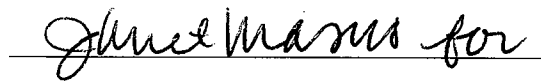
Yes: 8 - Mr. Phillips, Mr. von Reichbauer, Mr. Gossett, Ms. Hague,
Ms. Patterson, Mr. Ferguson, Mr. Dunn and Mr. McDermott
No: 0
Excused: 1 - Ms. Lambert

KING COUNTY COUNCIL
KING COUNTY, WASHINGTON



Larry Gossett, Chair

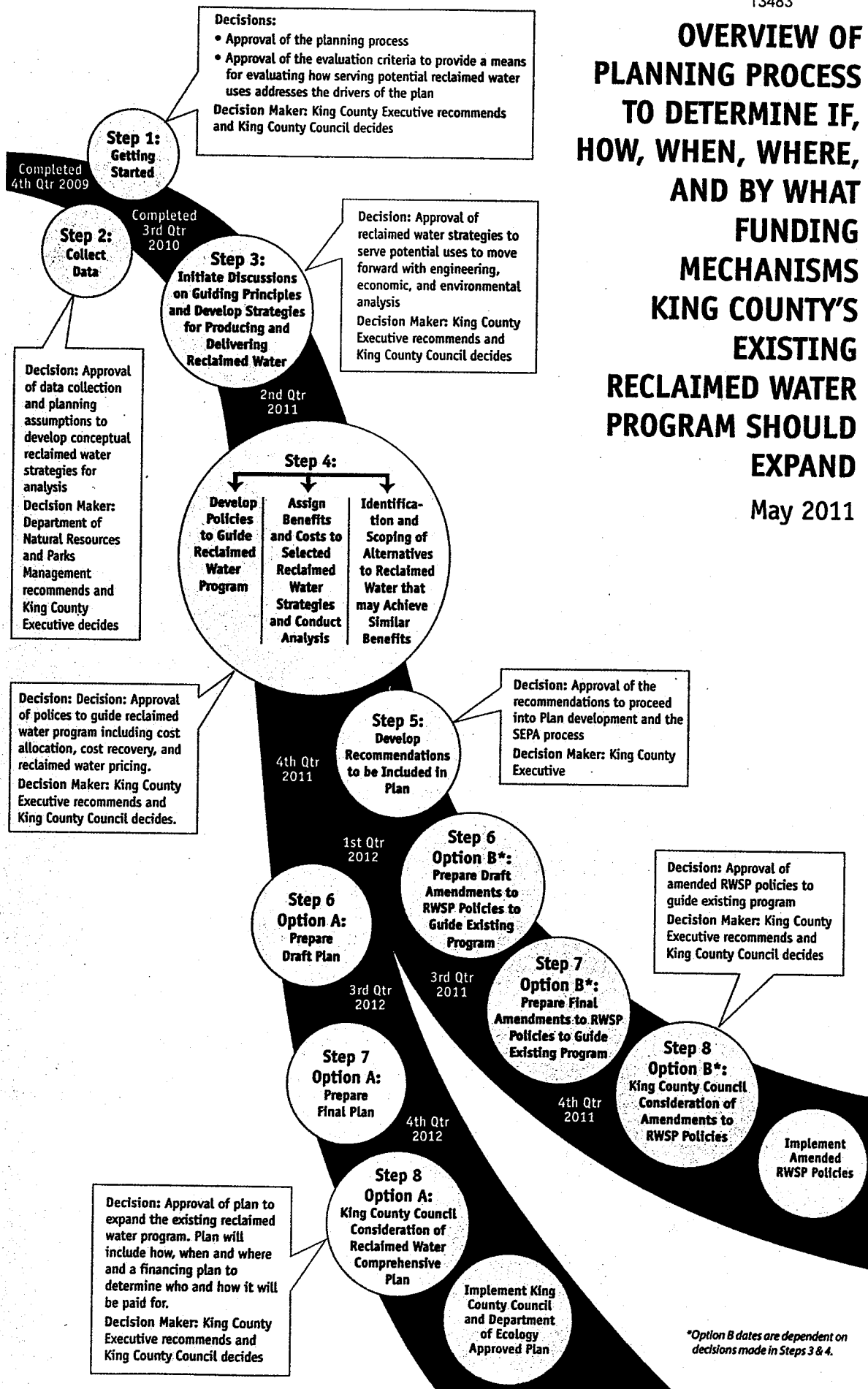
ATTEST:



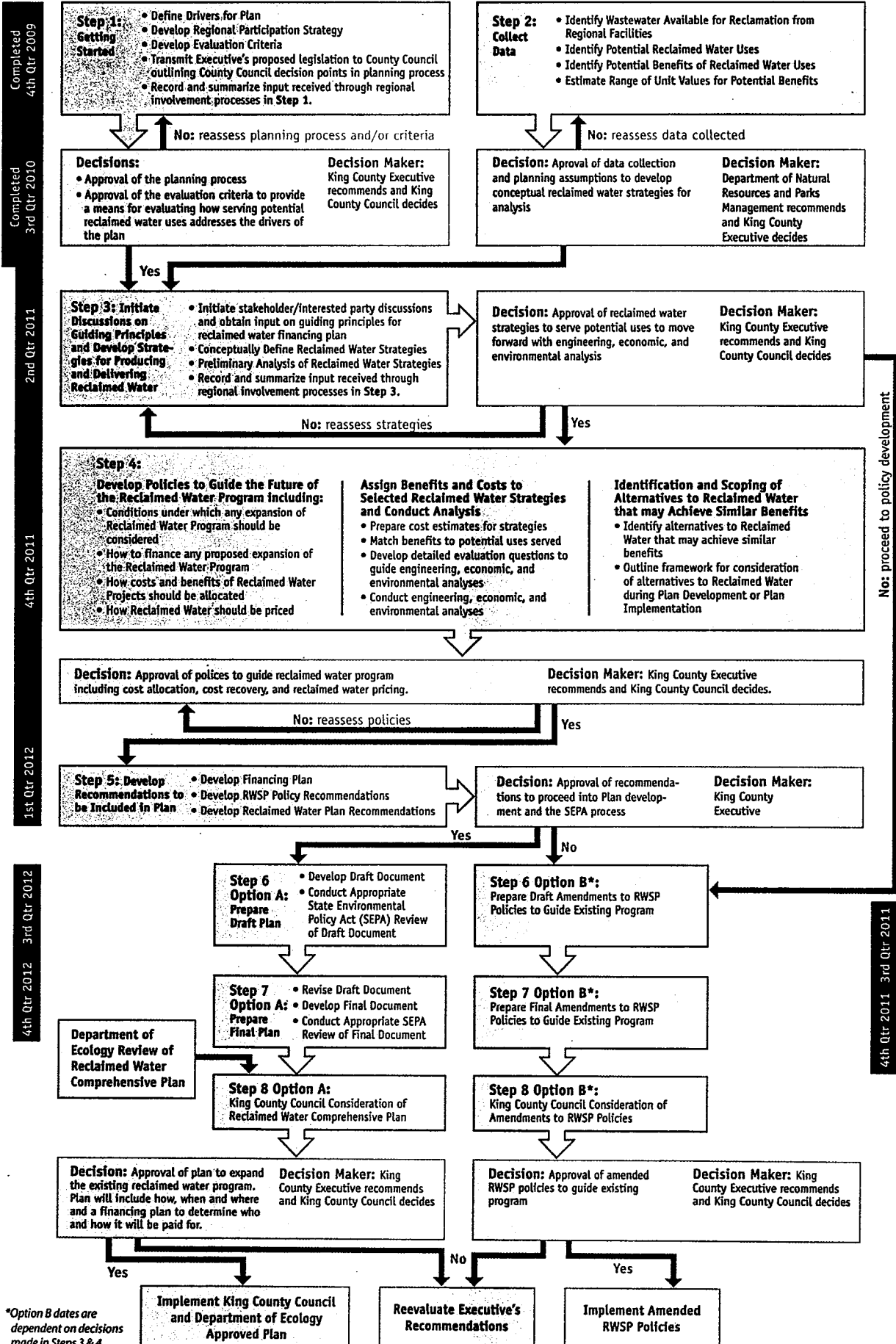
Anne Noris, Clerk of the Council

Attachments: A. Overview of Planning Process to Determine if, How, When, Where and by What Funding Mechanisms King County's Existing Reclaimed Water Program Should Expand - dated May, 2011

OVERVIEW OF PLANNING PROCESS TO DETERMINE IF, HOW, WHEN, WHERE, AND BY WHAT FUNDING MECHANISMS KING COUNTY'S EXISTING RECLAIMED WATER PROGRAM SHOULD EXPAND May 2011



STEPS, TASKS, DECISION POINTS IN PLANNING PROCESS TO DETERMINE IF, HOW, WHEN, WHERE, AND BY WHAT FUNDING MECHANISMS KING COUNTY'S EXISTING RECLAIMED WATER PROGRAM SHOULD EXPAND May 2011



*Option B dates are dependent on decisions made in Steps 3 & 4.